

SPRAY APPLICATOR HOLLOW SHAFT LIP SEAL REPLACEMENT

The Wilevco RA Spray Applicator utilizes a unique, patented hollow shaft feed system that requires lip seals to keep the spraying system from leaking where the spinning hollow shaft and Tri-Clamp manifold feed circuit meet. Positioning of the lip seal is **CRITICAL** to keep the rotary atomization assembly from leaking. Therefore the lip seal-mounting bracket is adjustable so that the lip seal is seated concentric to the hollow shaft. Use the diagram on page 2 for reference to the written explanation below.

REPLACING THE LIP SEAL:

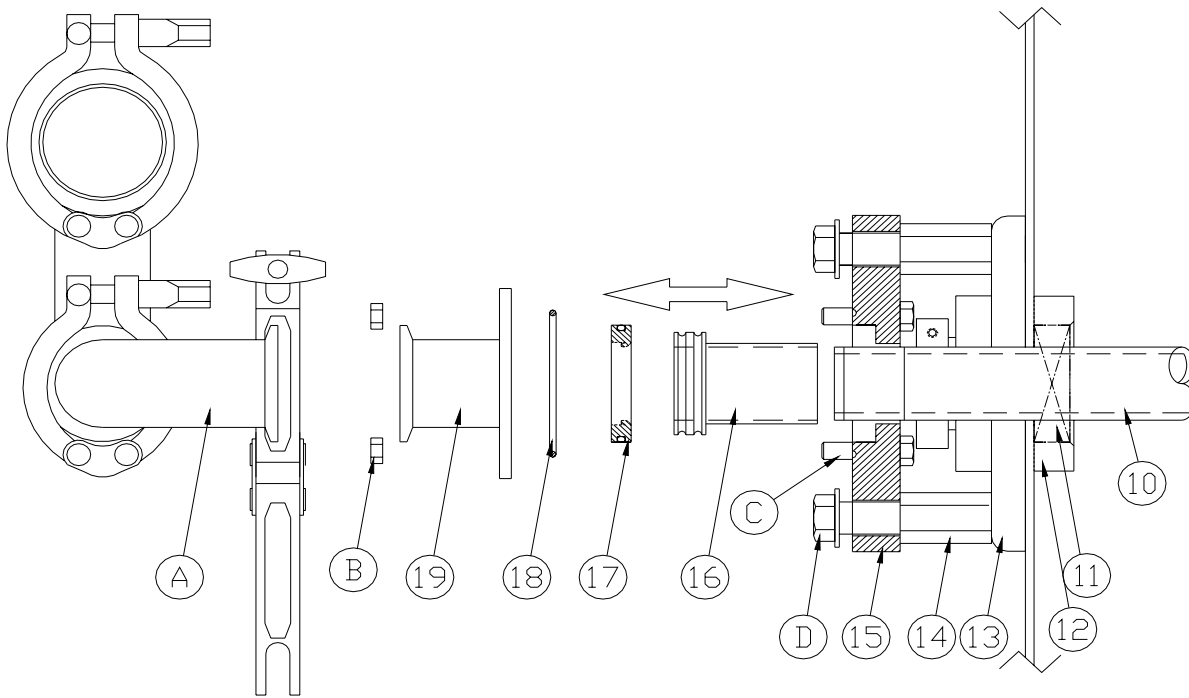
- Remove the Tri-Clamp manifold feed circuit (A) from the lip seal cap (19) and set aside.
- Remove the 1/4-20 acorn nuts (B) that holds the lip seal cap and o-ring (18) in place. Set these items aside.
- Carefully remove the old lip seal (17).
- Loosen the four 3/8-16 hex head bolts (D) that hold the lip seal mounting bracket (15) to the four hexagon standoffs (14).
- Slide the alignment tool (16) through the lip seal mounting bracket (15) and over the hollow shaft.
- Tighten down the four 3/8-16 bolts (D) to approximately 15 ft/lbs². **DO NOT OVERTIGHTEN.**
- Remove the alignment tool (16) and insert the lip seal (17) with the “c” of the seal facing out (you should see the SS energizing spring when using the white plastic seal).
- Install o-ring (18) into the o-ring groove on the lip seal mounting bracket (15).
- Replace the lip seal cap (19) onto the 1/4-20 bolts (4).
- Tighten 1/4-20 nuts (B). **DO NOT OVERTIGHTEN.**
- Replace the Tri-Clamp manifold feed circuit (A).

NOTE:

- If you use the white plastic lip seal it is recommended that after reassembly you run them dry for 5 minutes ONLY to “seat” the seal. Wilevco part # RAC82-053.
- If you use the brown rubber seal it is recommended to apply food grade grease to the “lip” of the seal before pressing it into the lip seal mounting bracket. Wilevco part # RAC82-055.

CAUTION:

- The rotary atomizers should not be run dry. This will result in premature lip seal failure.



LIP SEAL ASSEMBLY

KEY	DESCRIPTION	WILEVCO PART NO.
A	1-1/2" TRICLAMP MANIFOLD	
B	1/4-20 S.S. ACORN NUT	
19	HOLLOW SHAFT LIP SEAL CAP	RAC92-020
18	S10 PUMP O-RING # 141	020-005
17	HOLLOW SHAFT LIP SEAL – STD.	RAC82-053
16	LIP SEAL ALIGNMENT TOOL	RAC92-030
C	1/4-20 x 1 1/2 HEX HEAD BOLT	
D	3/8-16 x 1 1/2 HEX HEAD BOLT	
15	LIP SEAL MOUNTING BRACKET	RAC82-020
14	THREADED STANDOFF	RAC82-022
13	4-BOLT FLANGE BEARING	RAC02-050
10	HOLLOW SHAFT	
11	LABYRINTH STYLE SHAFT SEAL	RAC82-060
12	LABYRINTH SEAL MOUNTING BRK'T.	RAC82-023