

# Spare Parts List

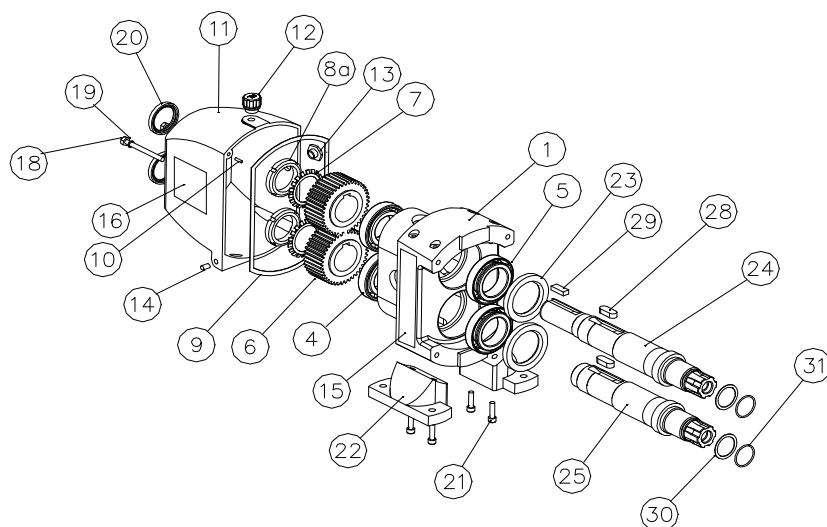
## 5 Size Pumps

Hy~Line



### Contents

|         |   |  |
|---------|---|--|
| Page 1  | - | Gearbox & Bearing Housing              |
| Page 2  | - | Wet End - Rotor Case & Rotors (Part 1) |
| Page 3  | - | Wet End - Rotor Case & Rotors (Part 2) |
| Page 4  | - | Ports                                  |
| Page 5  | - | Single Mechanical Seal                 |
| Page 6  | - | Flush For Single Mechanical Seal       |
| Page 7  | - | Double Mechanical Seal Conversion Kit  |
| Page 8  | - | Single O-Ring Seal                     |
| Page 9  | - | Double O-Ring Seal                     |
| Page 10 | - | Relief Valves                          |
| Page 11 | - | Thermal Jackets                        |
| Page 12 | - | Tools                                  |



## 5 Size Pumps

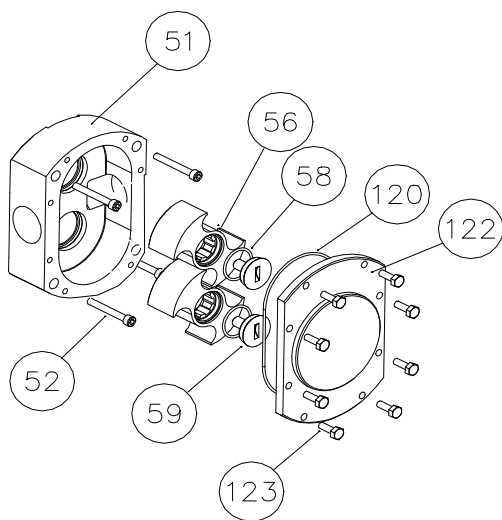
### Gearbox & Bearing Housing

| Key No. | Description   | Where used         | Part No.                 | Qty Req. |
|---------|---|--------------------|--------------------------|----------|
| 1       | Bearing carrier Housing - Aluminium                                       | 52 & 54 Size       | 54505-0000               | 1        |
| 2       | Eye Bolt  | 52 & 54 Size       | SP7040-0013              | 1        |
| 3       | Washer - Eye Bolt   | 52 & 54 Size       | X5268-002                | 1        |
| 4       | Bearing Rear  | 52 & 54 Size       | 92601-0483               | 2        |
| 5       | Bearing Front   | 52 & 54 Size       | 92601-0483               | 2        |
| 6       | Timing Gear Set (2 gears per set)   | 52 & 54 Size       | 54508-0000               | 1        |
| 7       | Tab Washer - Gear Nut   | 52 & 54 Size       | 92601-0485               | 2        |
| 8a      | Gear Nut  | 52 & 54 Size       | 92601-0484               | 2        |
| 9       | Gasket Gear Cover   | 52 & 54 Size       | 54507-0001               | 1        |
| 10      | Roll Pin - Bearing Carrier Housing  | 52 & 54 Size       | SP3100-0225              | 2        |
| 11      | Gear Cover - Aluminium  | 52 & 54 Size       | 54506-0100               | 1        |
| 12      | Plug - Oil Filler/Breather  | 52 & 54 Size       | 54020-0002               | 1        |
| 13      | Oil Level Window  | 52 & 54 Size       | SP8022-2248              | 1        |
| 14      | Drain Plug  | 52 & 54 Size       | SP2650-0220              | 1        |
| 15      | Label - Hy~Line   | 52 & 54 Size       | 23005-1820               | 1        |
| 16      | Label - Rotary Lobe Pump  | 52 & 54 Size       | 23005-1822               | 1        |
| 18      | Screw - Gear Cover  | 52 & 54 Size       | X3000-223F               | 2        |
| 19      | Washer (Nylon) - Gear Cover   | 52 & 54 Size       | SP1613-1390              | 2        |
| 20      | Lip Seal - Rear Gear Cover  | 52 & 54 Size       | X5280-011                | 2        |
| 21      | Screws - Foot Mounting  | 52 & 54 Size       | X3007-182F               | 4        |
| 22      | Foot - Horizontal Ports (Aluminium)<br>- Vertical Ports (Stainless steel) | 52 & 54 Size       | 54518-0100<br>54519-0000 | 2        |
| 23      | Lip Seal - Front Bearing Carrier Housing                                  | 52 & 54 Size       | 92701-1028               | 2        |
| 24      | Shaft - Driving   | 52 Size<br>54 Size | 54527-0000<br>54547-0000 | 1        |
| 25      | Shaft - Driven  | 52 Size<br>54 Size | 54528-0000<br>54548-0000 | 1        |
| 28      | Key - Timing Gear Drive   | 52 & 54 Size       | X4000-503A               | 2        |
| 29      | Key - Drive Shaft   | 52 & 54 Size       | X4000-528A               | 1        |
| 30      | Shim Kit - Rotor Clearance  | 52 & 54 Size       | 54586-0000B              | 1        |
| 31      | O-Ring - Shim Retention - Nitrile   | 52 & 54 Size       | 92000-1427               | 2        |

|  |   |              |             |   |
|--|---|--------------|-------------|---|
|  | Gearbox Service Kit<br>Consists of:<br>2 x Front Oil Seal for bearing housing (23)<br>2 x Rear Oil Seal for gear cover (20)<br>1 x Gasket - Gear cover (9)<br>2 x Washer for sealing gear cover screws (19) | 52 & 54 Size | 54585-0000B | 1 |
|--|---|--------------|-------------|---|

5 Size Pumps

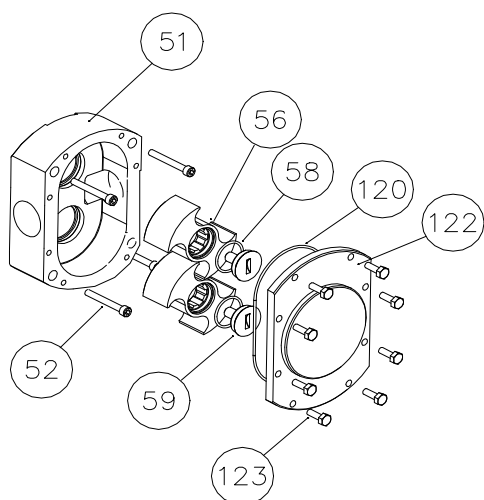
Wet End - Part 1  
Rotor Case & Rotors



| Key No.   | Description                                       | Where used | Part No.   | Qty Req. |
|---|---|------------|------------|----------|
| 51  | Rotor Case  |            |            | 1        |
|   | For Bolt on Ports (All Mech Seals)                |            |            |          |
|   | Standard Machined Finish                          | 52 Size    | 54523-0000 |          |
|   |   | 54 Size    | 54543-0000 |          |
|   | Electro-Polish Finish                             | 52 Size    | 54523-0090 |          |
|   |   | 54 Size    | 54543-0090 |          |
|   | 0.5 Micron & Electro-Polish Finish                | 52 Size    | 54523-0010 |          |
|   |   | 54 Size    | 54543-0010 |          |
|   | For Bolt on Ports + Double O-Ring Seal            |            |            |          |
|   | Standard Machined Finish                          | 52 Size    | 54523-0002 |          |
|   |   | 54 Size    | 54523-0002 |          |
|   | Electro-Polish Finish                             | 52 Size    | 54523-0092 |          |
|   |   | 54 Size    | 54543-0092 |          |
|   | 0.5 Micron & Electro-Polish Finish                | 52 Size    | 54523-0012 |          |
|   |   | 54 Size    | 54543-0012 |          |
|   | For Bolt on Ports + Hopper Inlet (All mech seals) |            |            |          |
|   | Standard Machined Finish                          | 52 Size    | 54523-0001 |          |
|   |   | 54 Size    | 54543-0001 |          |
|   | Electro-Polish Finish                             | 52 Size    | 54523-0091 |          |
|   |   | 54 Size    | 54543-0091 |          |
| 0.5 Micron & Electro-Polish Finish                    | 52 Size   | 54523-0011 |            |          |
|   | 54 Size   | 54543-0011 |            |          |
| For Bolt on Ports + Hopper Inlet + Double O-Ring Seal |   |            |            |          |
| Standard Machined Finish                              | 52 Size   | 54523-0003 |            |          |
|   | 54 Size   | 54523-0003 |            |          |
| Electro-Polish Finish                                 | 52 Size   | 54523-0093 |            |          |
|   | 54 Size   | 54543-0093 |            |          |
| 0.5 Micron & Electro-Polish Finish                    | 52 Size   | 54523-0013 |            |          |
|   | 54 Size   | 54543-0013 |            |          |
| For Welded Tri Clamp Ports                            |   |            |            |          |
| Standard Machined Finish                              | 52 Size   | 56523-1000 |            |          |
|   | 54 Size   | 56543-1000 |            |          |
| Electro-Polish Finish                                 | 52 Size   | 56523-1090 |            |          |
|   | 54 Size   | 56543-1090 |            |          |
| 0.5 Micron & Electro-Polish Finish                    | 52 Size   | 56523-1010 |            |          |
|   | 54 Size   | 56543-1010 |            |          |
| 52  | Screw - Rotor Case                                | 52 Size    | X3007-222F | 4        |
|   |   | 54 Size    | X3007-227F |          |

5 Size Pumps

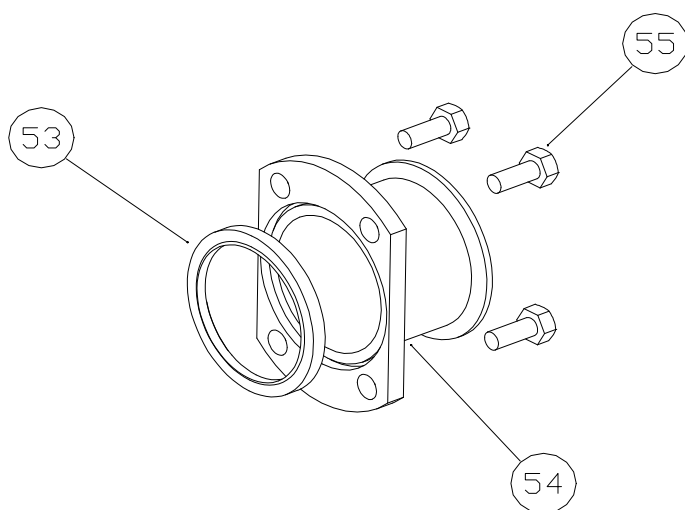
Wet End - Part 2  
Rotor Case & Rotors



| Key No. | Description   | Where used   | Part No.   | Qty Req. |
|---------|---|--|--|----------|
| 56      | Rotor Kit (Includes 2 x rotors)<br>High Pressure (316 SS) - Standard Machined<br>High Pressure (316 SS) - Electro-Polish<br>High Pressure (316 SS) - 0.5 Micron & Electro-Polish<br><br>High Efficiency (316 SS) - Standard Machined<br>High Efficiency (316 SS) - Electro-Polish<br>High Efficiency (316 SS) - 0.5 Micron & Electro-Polish<br><br>High Pressure (316L SS) - Standard Machined<br>High Pressure (316L SS) - Electro-Polish<br>High Pressure (316L SS) - 0.5 Micron & Electro-Polish<br><br>High Efficiency (316L SS) - Standard Machined<br>High Efficiency (316L SS) - Electro-Polish<br>High Efficiency (316L SS) - 0.5 Micron & Electro-Polish | 52 Size<br>54 Size<br>52 Size<br>54 Size<br>52 Size<br>54 Size<br><br>52 Size<br>52 Size<br>52 Size<br><br>52 Size<br>54 Size<br>52 Size<br>54 Size<br>52 Size<br>54 Size<br><br>52 Size<br>52 Size<br>52 Size | 54522-0009B<br>54542-0009B<br>54522-0099B<br>54542-0099B<br>54522-0019B<br>54542-0019B<br><br>54522-0008B<br>56522-0098B<br>56522-0018B<br><br>54522-L-0009B<br>54542-L-0009B<br>54522-L-0099B<br>54542-L-0099B<br>54522-L-0019B<br>54542-L-0019B<br><br>54522-L-0008B<br>54522-L-0098B<br>54522-L-0018B | 1        |
| 58      | O-Ring - Rotor Retainer<br>- Nitrile<br>- EPDM<br>- Viton<br>- PTFE   | 52 & 54 Size   | 92000-1425<br>92000-1449<br>92000-1447<br>92000-1448   | 2        |
| 59      | Rotor Retaining Screw   | 52 & 54 Size   | 54525-0000   | 2        |
| 60      | Shaft Guard (Not Shown on Exploded View)  | 52 & 54 Size   | 54530-0000   | 2        |
| 61      | Shaft Guard Stud (Not Shown on Exploded View)   | 52 & 54 Size   | 54529-0000   | 2        |
| 62      | Shaft Guard Nut (Not Shown on Exploded View)  | 52 & 54 Size   | X3070-061F   | 2        |
| 120     | O-Ring - End Cover<br>- Nitrile<br>- EPDM<br>- Viton<br>- PTFE  | 52 & 54 Size   | 92000-1424<br>92000-1433<br>92000-1432<br>92000-6018   | 1        |
| 122     | End Cover - Plain O-Ring Joint 316 SS<br>Standard Machined Finish<br>Electro-Polish Finish<br>0.5 Micron & Electro-Polish Finish<br>End Cover - Controlled Compression Joint (Gasket)<br>Standard Machined Finish<br>Electro-Polish Finish<br>0.5 Micron & Electro-Polish Finish  | 52 & 54 Size   | 54509-0000<br>54509-0090<br>54509-0010<br><br>56509-0000<br>56509-0090<br>56509-0010   | 1        |
| 123     | Bolt - End Cover  | 52 & 54 Size   | X3001-211F   | 4        |

5 Size Pumps

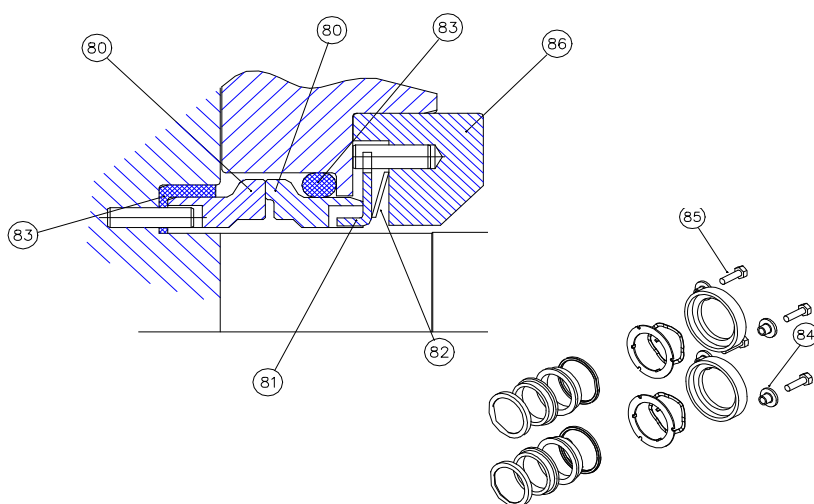
Ports



| Key No. | Description  | Where used   | Part No.           | Qty Req. |
|---------|--|--------------|--------------------|----------|
| 53      | Port Joint Ring - Nitrile<br><br>- EPDM<br><br>- Viton<br><br>- PTFE   | 52 Size      | 54058-0150         | 2        |
|         |  | 54 Size      | 54058-0200         |          |
|         |  | 52 Size      | 24058-0157         |          |
|         |  | 54 Size      | 24058-0207         |          |
|         |  | 52 Size      | 54058-0154         |          |
|         |  | 54 Size      | 54058-0204         |          |
|         |  | 52 Size      | 24058-0152         |          |
|         |  | 54 Size      | 24058-0202         |          |
| 55      | Screw - Bolt on Port Retainers   | 52 & 54 Size | X3001-207F         | 8        |
| 54      | Port Kit (Includes 2 x Ports & 2 x Port Joint Rings (Nitrile))<br>Tri - Clamp (BS4825 part 3) - Standard<br><br>Tri - Clamp (BS4825 part 3) - Enlarged<br><br>BSP (BS2779) - Standard<br><br>BSP (BS2779) - Enlarged<br><br>IDF (ISO 2853) - Standard<br><br>IDF (ISO 2853) - Enlarged<br><br>RJT (BS1864) - Standard<br><br>RJT (BS1864) - Enlarged<br><br>3A ACME (BS3581) - Standard<br><br>3A ACME (BS3581) - Enlarged<br><br>DIN 11851 - Standard<br><br>DIN 11851 - Enlarged<br><br>SMS 1146 - Standard<br><br>SMS 1146 - Enlarged<br><br>NPT - Standard<br><br>NPT - Enlarged | 52 Size      | 24055-1150B        | 1        |
|         |  | 54 Size      | 24055-1200B        |          |
|         |  | 52 Size      | 24255-1200B        |          |
|         |  | 54 Size      | 24255-1300B        |          |
|         |  | 52 Size      | <b>24055-2150B</b> |          |
|         |  | 54 Size      | 24055-2200B        |          |
|         |  | 52 Size      | 24255-2200B        |          |
|         |  | 54 Size      | 24255-2300B        |          |
|         |  | 52 Size      | 24055-3150B        |          |
|         |  | 54 Size      | 24055-3200B        |          |
|         |  | 52 Size      | 24255-3200B        |          |
|         |  | 54 Size      | 24255-3300B        |          |
|         |  | 52 Size      | 24055-4150B        |          |
|         |  | 54 Size      | 24055-4200B        |          |
|         |  | 52 Size      | 24255-4200B        |          |
|         |  | 54 Size      | 24255-4300B        |          |
|         |  | 52 Size      | 24055-5150B        |          |
|         |  | 54 Size      | 24055-5200B        |          |
|         |  | 52 Size      | 24255-5200B        |          |
|         |  | 54 Size      | 24255-5300B        |          |
|         |  | 52 Size      | 24055-6150B        |          |
|         |  | 54 Size      | 24055-6200B        |          |
|         |  | 52 Size      | 24255-6200B        |          |
|         |  | 54 Size      | 24255-6300B        |          |
|         |  | 52 Size      | 24055-7150B        |          |
|         |  | 54 Size      | 24055-7200B        |          |
|         |  | 52 Size      | 24255-7200B        |          |
|         |  | 54 Size      | 24255-7300B        |          |
| 52 Size | 24055-9150B  |              |                    |          |
| 54 Size | 24055-9200B  |              |                    |          |
| 52 Size | 24255-9200B  |              |                    |          |
| 54 Size | 24255-9300B  |              |                    |          |

5 Size Pumps

Single Mechanical Seal



| Key No. | Description  | Where used   | Part No.   | Qty Req. |
|---------|--|--------------|--|----------|
| 80      | Primary Seal Face Kit (Includes both faces)<br>- Carbon/Stainless Steel<br>- Carbon/Silicon Carbide<br>- Silicon Carbide/Silicon Carbide | 52 & 54 Size | 96080-0594<br>96080-0583<br>96080-0584                       | 2        |
| 81      | Drive Plate - Mechanical Seal  | 52 & 54 Size | X5240-003  | 2        |
| 82      | Wave Spring  | 52 & 54 Size | X5250-016  | 2        |
| 83      | Single Seal Trim Kit<br>- Nitrile<br>- EPDM<br>- Viton<br>- PTFE   | 52 & 54 Size | 96080-0613<br>96080-0586<br>96080-0587<br>Use 83a, 83b & 83c | 2        |
| 83a     | Washer under Seal Rotary Face (fitted to rotor) - Viton  | 52 & 54 Size | 54020-0005   | 2        |
| 83b     | PTFE Sleeve (fitted to rotor)  | 52 & 54 Size | 54511-0000   | 2        |
| 83c     | PTFE Encapsulated O-Ring   | 52 & 54 Size | 92000-6017   | 2        |
| 84      | Clamp Plate - Seal Housing   | 52 & 54 Size | 56011-0000   | 4        |
| 85      | Screw - Seal Housing   | 52 & 54 Size | X3001-209F   | 4        |
| 86      | Seal Housing Kit (Includes wave spring)  | 52 & 54 Size | 96080-0588   | 2        |

|  |  |  |  |   |
|--|--|--|--|---|
|  | Pump Head Trim Kit<br>- Nitrile<br>- EPDM<br>- Viton<br>- PTFE | 52 Size<br>54 Size<br>52 Size<br>54 Size<br>52 Size<br>54 Size<br>52 Size<br>54 Size | 54584-9150B<br>54584-9200B<br>54584-9157B<br>54584-9207B<br>54584-9154B<br>54584-9204B<br>54584-9152B<br>54584-9202B | 1 |
|--|--|--|--|---|

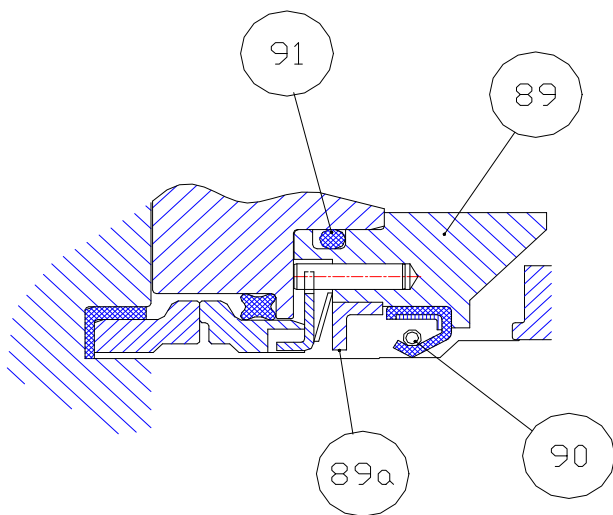
Consists of: 2 x Single seal trim kit (83), 2 x O-Ring rotor retainer (58), 1 x End cover o-ring (120), 2 x Port seals (53)  
2 x O-Ring - Shim retention (31)

|  |   |  |  |   |
|--|---|--|--|---|
|  | Seal Service Kit  | <b>52 Size</b>                                       | <b>54 Size</b>                                       | 1 |
|  | Carbon/Stainless<br>- Nitrile<br>- EPDM<br>- Viton<br>- PTFE                | 54599-0001<br>54599-0003<br>54599-0005<br>54599-0007 | 54599-0002<br>54599-0004<br>54599-0006<br>54599-0008 |   |
|  | Carbon/Silicon Carbide<br>- Nitrile<br>- EPDM<br>- Viton<br>- PTFE          | 54599-0009<br>54599-0011<br>54599-0013<br>54599-0015 | 54599-0010<br>54599-0012<br>54599-0014<br>54599-0016 |   |
|  | Silicon Carbide/Silicon Carbide<br>- Nitrile<br>- EPDM<br>- Viton<br>- PTFE | 54599-0017<br>54599-0019<br>54599-0021<br>54599-0023 | 54599-0018<br>54599-0020<br>54599-0022<br>54599-0024 |   |

Consists of: 2 x Primary seal face kit (80), 1 x Pump head trim kit, 2 x Seal housing kit (86), 1 x Shim kit (30)

5 Size Pumps

Flush for Single Mechanical Seals



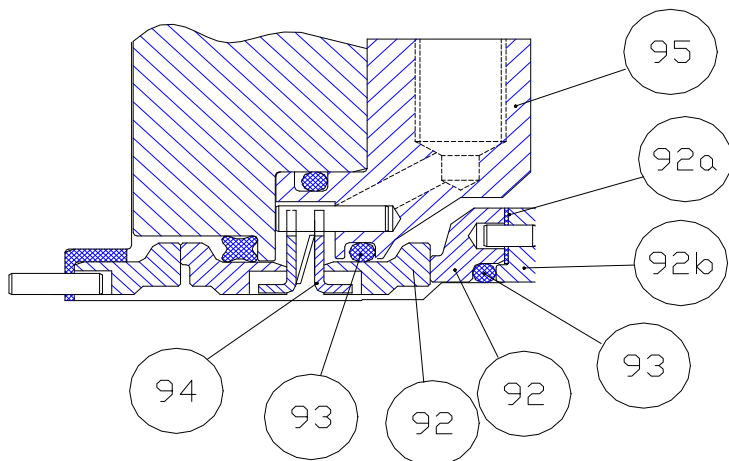
| Key No. | Description                       | Where used                           | Part No.   | Qty Req. |
|---------|-----------------------------------|--------------------------------------|------------|----------|
| 89      | Seal Housing Kit                  | 52 & 54 Size                         | 96080-0590 | 2        |
| 89a     | Washer                            | Supplied as part of Seal Housing Kit |            |          |
| 90      | Lip Seal - Seal Housing (Nitrile) | 52 & 54 Size                         | 92701-1023 | 2        |
| 91      | O-Ring - Seal Housing (Nitrile)   | 52 & 54 Size                         | 92000-1453 | 2        |

Seal housing kit consists of:  
 1 x wave spring, 1 x drive ring, 1 x o-ring, 1 x flush housing, 1 x washer, 3 x pin.

|  |   |  |            |   |
|--|---|--|------------|---|
|  | Flushed Seal Conversion Kit - Nitrile<br>Consists of:<br>2 x Seal Housing Kit (89), 2 x Lip Seal (90) |  | 54599-0025 | 1 |
|--|---|--|------------|---|

5 Size Pumps

Double Mechanical Seal Conversion Kit



| Key No. | Description                                      | Where used                                  | Part No.                 | Qty Req. |
|---------|--|---|--------------------------|----------|
| 92      | Secondary Seal Face Kit - Carbon/Silicon Carbide | 52 & 54 Size                                | 96080-0585               | 2        |
| 92a     | Rubber Washer - EPDM                             | Supplied as part of Secondary Seal Face Kit |                          |          |
| 92b     | Drive Ring                                       | Supplied as part of Secondary Seal Face Kit |                          |          |
| 93      | Secondary Seal Trim Kit - EPDM<br>- Viton        | 52 & 54 Size                                | 96080-0592<br>96080-0593 | 2        |
| 94      | Drive Plate - Mechanical Seal Secondary          | 52 & 54 Size                                | X5240-003                | 2        |
| 95      | Seal Housing Kit                                 | 52 & 54 Size                                | 96080-0589               | 2        |

Secondary Seal Face Kit Consists of:  
1 x Face inboard & seat outboard, 1 x Rotary seal face (outboard), 1 x Rubber washer, 1 x drive ring, 1 x pin

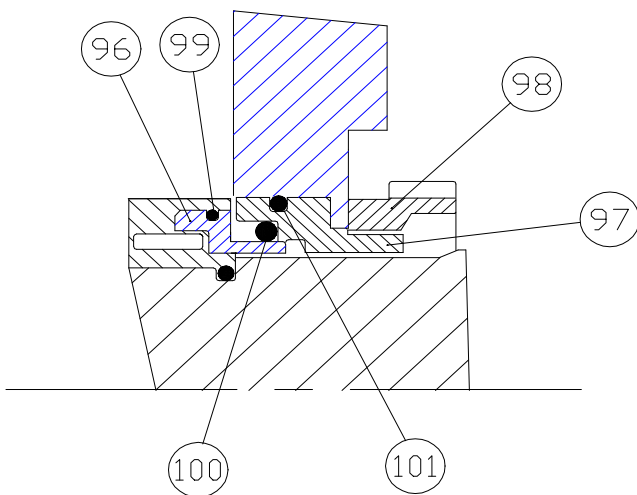
Secondary Seal Trim Kit Consists of:  
1 x O-ring (2.62x44.12), 1 x O-ring (2.62x39.34), 1 x O-ring (2.62x61.60)

Seal Housing Kit Consists of:  
1 x Wave spring, 2 x Drive ring, 1 x Double flush housing, 3 x Pins

|  |   |  |            |   |
|--|---|--|------------|---|
|  | Double Mechanical Seal Conversion Kit<br>Consists of:<br>2 x Secondary Seal Face Kit (92), 2 x Secondary Seal Trim Kit (93),<br>2 x Drive Plate Mechanical Seal (94), 2 x Seal Housing Kit (95) |  | 54599-0030 | 1 |
|--|---|--|------------|---|

5 Size Pumps

Single O-Ring Seal



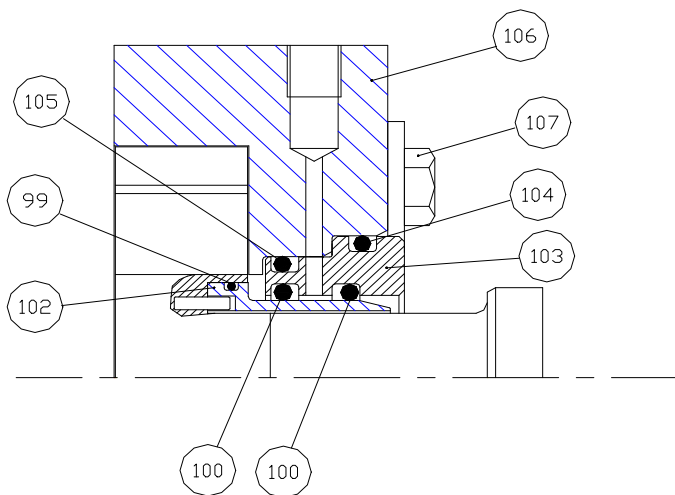
| Key No. | Description                     | Where used   | Part No.   | Qty Req. |
|---------|---------------------------------|--------------|------------|----------|
| 96      | Seal Sleeve                     | 52 & 54 Size | 54553-0000 | 2        |
| 97      | Seal Housing                    | 52 & 54 Size | 54552-0000 | 2        |
| 98      | Retaining Nut                   | 52 & 54 Size | 54554-0000 | 2        |
| 99      | O-Ring - Rotor (Nitrile)        | 52 & 54 Size | 92000-6032 | 2        |
| 100     | O-Ring - Primary Seal (Viton)   | 52 & 54 Size | 92000-6052 | 2        |
| 101     | O-Ring - Seal Housing (Nitrile) | 52 & 54 Size | 92000-6043 | 2        |

|  |  |              |            |   |
|--|--|--------------|------------|---|
|  | Single O-Ring Seal Kit<br>Consists of:-<br>2 x Seal Sleeve, 2 x Seal Housing, 2 x Retaining Nut<br>2 x O-Ring Rotor (Nitrile), 2 x O-Ring Primary Seal (Viton),<br>2 x O-Ring Seal Housing (Nitrile) | 52 & 54 Size | 54551-0000 | 1 |
|--|--|--------------|------------|---|

|  |  |  |  |   |
|--|--|--|--|---|
|  | Single O-Ring Maintenance Seal Kit<br><br>Nitrile<br>EPDM<br>Viton<br>PTFE<br><br>Consists of:-<br>1 x Single O-Ring Seal Kit, 1 x End Cover O-Ring (120), 1 x Shim kit (30)<br>2 x O-Ring Rotor Retainer (58), 2 x O-ring Shim Retention (31) |  | 54599-0040<br>54599-0041<br>54599-0042<br>54599-0043 | 1 |
|--|--|--|--|---|

5 Size Pumps

Double O-Ring Seal



| Key No. | Description                   | Where used   | Part No.   | Qty Req. |
|---------|-------------------------------|--------------|------------|----------|
| 99      | O-Ring - Rotor (Nitrile)      | 52 & 54 Size | 92000-6032 | 2        |
| 100     | O-Ring - Primary Seal (Viton) | 52 & 54 Size | 92000-6052 | 4        |
| 102     | Seal Sleeve                   | 52 & 54 Size | 54537-0000 | 2        |
| 103     | Seal Housing                  | 52 & 54 Size | 54538-0000 | 2        |
| 104     | O-Ring Housing Nitrile)       | 52 & 54 Size | 92000-6036 | 4        |
| 105     | O-Ring Flush Housing          | 52 & 54 Size | 92000-6012 | 2        |
| * 106   | Housing - Flush               | 52 & 54 Size | 54532-0000 | 2        |
| 107     | Bolt Flush Housing            | 52 & 54 Size | X3001-211F | 4        |

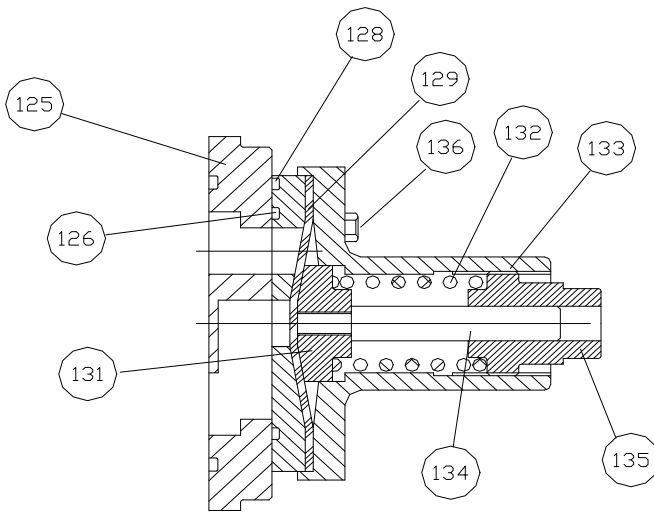
\* Note: Rotor case may be different, Refer to JABSCO quoting pump serial number for information

|  |              |            |   |
|--|--------------|------------|---|
| Double O-Ring Seal Kit<br>Consists of:-<br>1 x Rotor Case - Double O-Ring Seal (Bolt on Ports)<br>2 x O-Ring Rotor (Nitrile) (99), 4 x O-Ring Primary seal (Viton) (100)<br>2 x Seal Sleeve (102), 2 x Seal Housing (103), 4 x O-Ring housing (Nitrile) (104)<br>2 x O-Ring Flush Housing (Nitrile) (105), 2 x Flush Housing (106)<br>4 x Bolt - Flush Housing (107) | 52 & 54 Size | 54536-0000 | 1 |
|--|--------------|------------|---|

|   |  |  |   |
|---|--|--|---|
| Double O-Ring Maintenance Seal Kit<br><br>Nitrile<br>EPDM<br>Viton<br>PTFE<br><br>Consists of:-<br>1 x Double O-Ring Seal Kit, 1 x End Cover O-Ring (120),<br>2 x O-Ring Rotor Retainer (58), 2 x O-ring Shim Retention (31), 1 x Shim kit (30) |  | 54599-0050<br>54599-0051<br>54599-0052<br>54599-0053 | 1 |
|---|--|--|---|

5 Size Pumps

Relief Valve

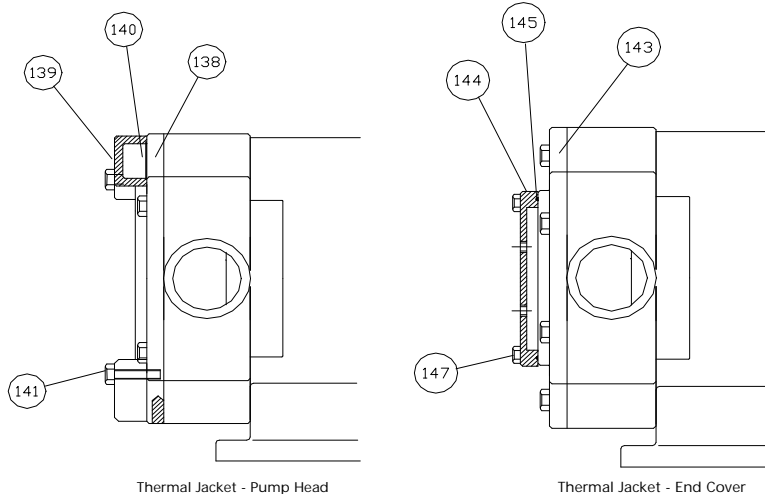


| Key No.      | Description   | Where used   | Part No.                               | Qty Req. |
|--------------|---|--------------|--|----------|
| Relief Valve |   |              |  |          |
| 125          | End Cover   | 52 & 54 Size | 54509-0001                             | 1        |
| 126          | O-Ring - Relief Valve<br>- Nitrile<br>- PTFE<br>- Viton | 52 & 54 Size | X4020-389X<br>X4020-389E<br>X4020-389Y | 1        |
| 128          | Seat - Relief valve                                     | 52 & 54 Size | 24172-0001                             | 1        |
| 129          | Diaphragm - Relief Valve<br>- Nitrile<br>- PTFE         | 52 & 54 Size | 54073-0021<br>24073-0011               | 1        |
| 131          | Plunger   | 52 & 54 Size | 24174-0000                             | 1        |
| 132          | Spring - Relief Valve                                   | 52 & 54 Size | 24175-0000                             | 1        |
| 133          | Housing   | 52 & 54 Size | 24176-0000                             | 1        |
| 134          | Valve Guide   | 52 & 54 Size | 24177-0000                             | 1        |
| 135          | Adjusting Screw   | 52 & 54 Size | 24178-0000                             | 1        |
| 136          | Bolt - Relief Valve                                     | 52 & 54 Size | X3001-215F                             | 2        |

|  |   |  |             |   |
|--|---|--|-------------|---|
|  | Relief Valve Kit (includes all of the components above) |  | 54581-0001B | 1 |
|--|---|--|-------------|---|

5 Size Pumps

Thermal Jackets



| Key No.                    | Description | Where used   | Part No.   | Qty Req. |
|----------------------------|-------------|--------------|------------|----------|
| Thermal Jacket - Pump Head |             |              |            |          |
| 138                        | End Cover   | 52 & 54 Size | 54509-0003 | 1        |
| 139                        | Jacket      | 52 & 54 Size | 54501-0001 | 2        |
| 140                        | O-Ring      | 52 & 54 Size | X4020-369B | 2        |
| 141                        | Screws      | 52 & 54 Size | X3001-213F | 4        |

|   |              |             |   |
|---|--------------|-------------|---|
| Pump Head Jacket Kit (Includes all of the components above) | 52 & 54 Size | 54580-0003B | 1 |
|---|--------------|-------------|---|

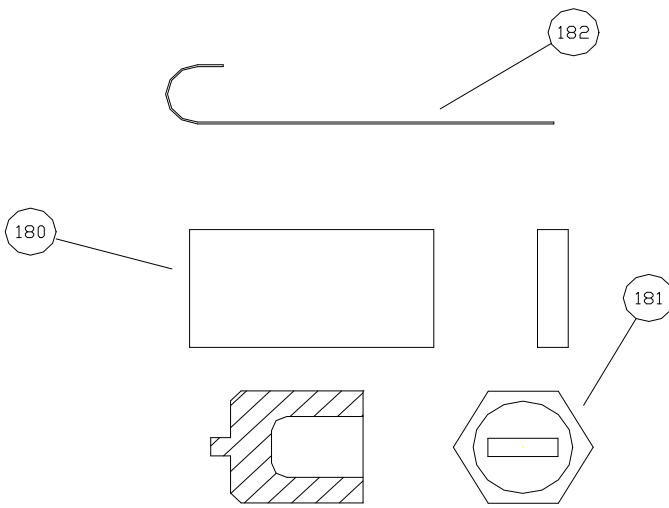
|                            |                |              |            |   |
|----------------------------|----------------|--------------|------------|---|
| Thermal Jacket - End Cover |                |              |            |   |
| 143                        | End Cover      | 52 & 54 Size | 54509-0004 | 1 |
| 144                        | Jacket         | 52 & 54 Size | 24636-0000 | 1 |
| 145                        | O-Ring - Outer | 52 & 54 Size | X4020-389B | 1 |
| 147                        | Screws         | 52 & 54 Size | X3001-209F | 2 |

|   |              |             |   |
|---|--------------|-------------|---|
| End Cover Jacket Kit (Includes all of the components above) | 52 & 54 Size | 54580-0004B | 1 |
|---|--------------|-------------|---|

|   |              |             |   |
|---|--------------|-------------|---|
| Relief Valve with Thermal Jacket - End Cover                                | 52 & 54 Size | 54580-0009B | 1 |
| Consists of:  |              |             |   |
| 1 x End cover (138), 1 x O-Ring - valve (126), 1 x Seat - valve (128)       |              |             |   |
| 1 x Diaphragm (129), 1 x Plunger (131), 1 x Spring (132), 1 x Housing (133) |              |             |   |
| 1 x Valve guide (134), 1 x Adjusting screw (135), 2 x bolts (136)           |              |             |   |
| 2 x Jacket (139), 2 x O-ring (140) & 4 x Screws (141)                       |              |             |   |

5 Size Pumps

Tools



| Key No. | Description                  | Where used   | Part No.   | Qty Req. |  |
|---------|------------------------------|--------------|------------|----------|--|
| 182     | Tool - Seal Seat Removal     | 52 & 54 Size | 54677-0000 | 1        |  |
| 180     | Tool - Rotor Locking Pad     | 52 & 54 Size | 55027-0004 | 1        |  |
| 181     | Socket Tool - Rotor Retainer | 52 & 54 Size | 54576-0000 | 1        |  |